



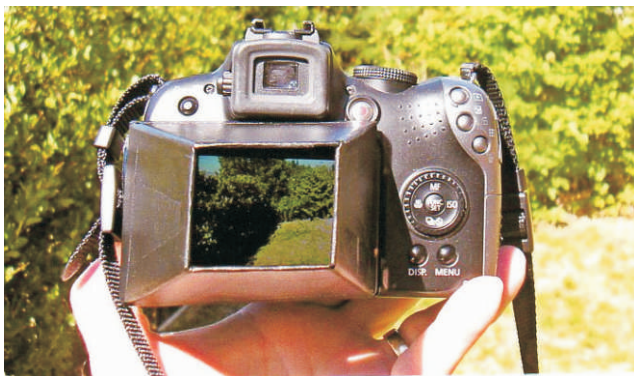
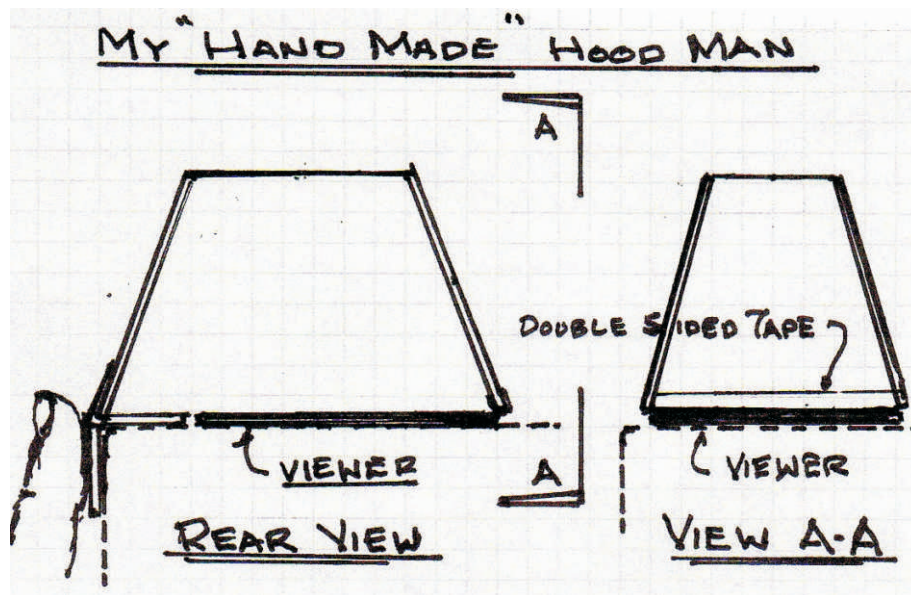
# MEMBERS SHARING IDEAS



SEPTEMBER 21, 2010

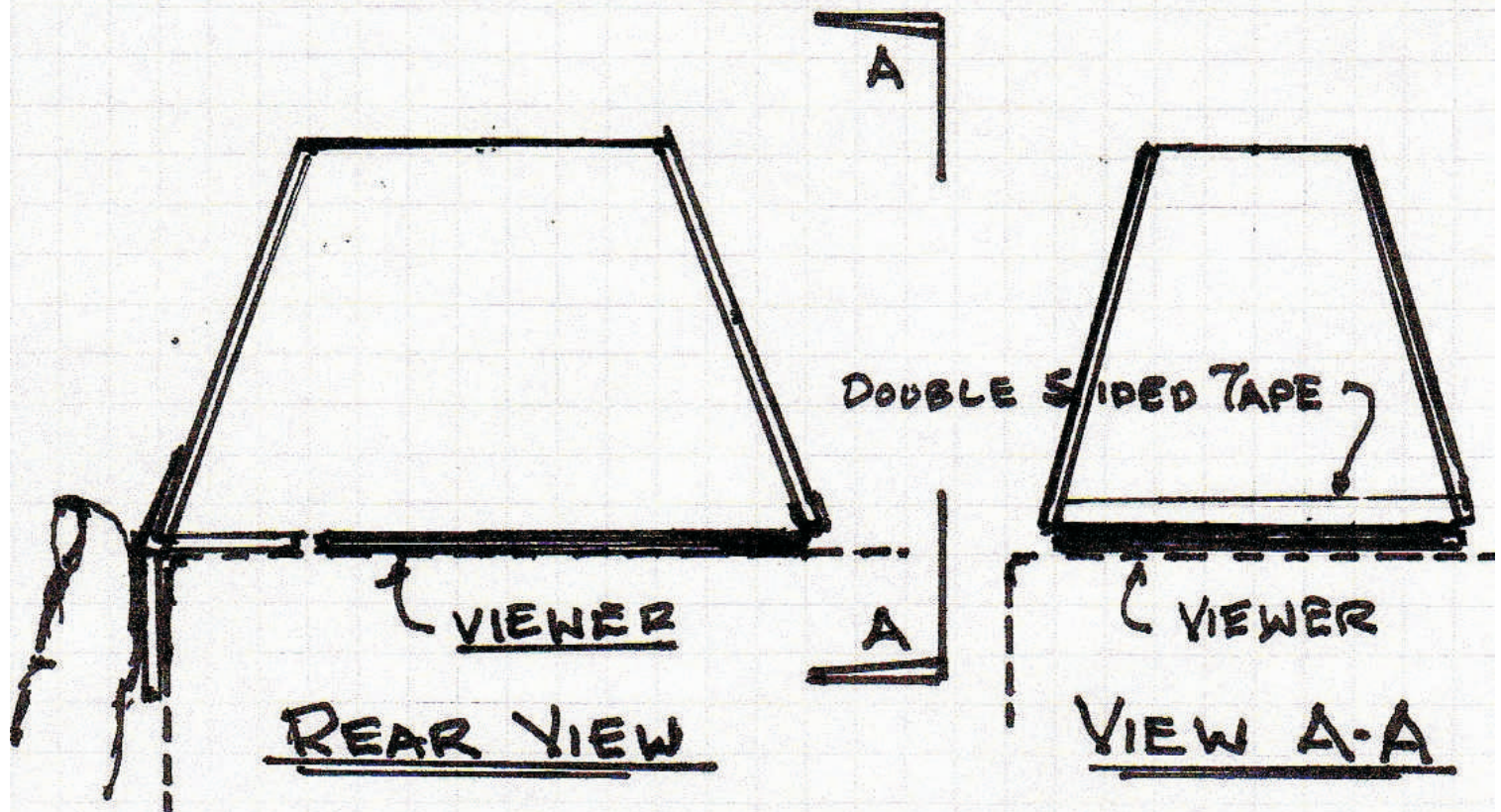
Bruce Brodie shows us  
how to Construct a

# HOODMAN



530-346-6889

# MY "HAND MADE" HOOD MAN



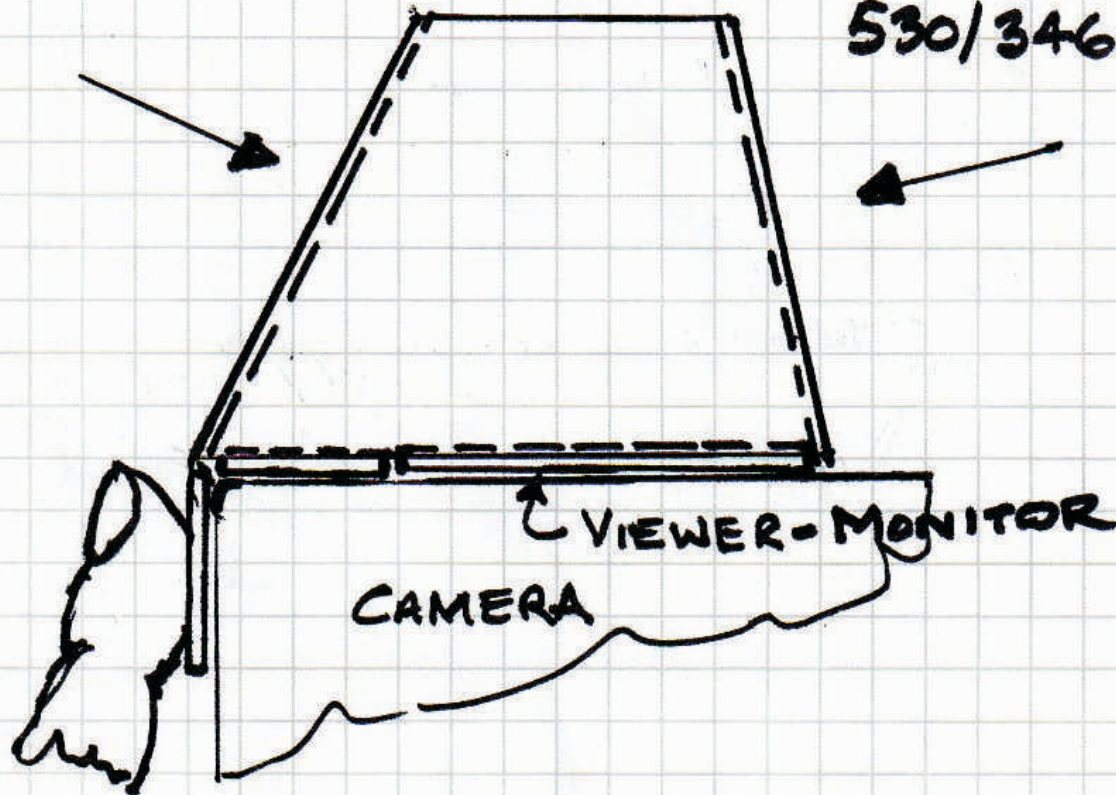
DRAWN FULL SIZE

## NOTE:

1. USE ALL OF THE ABOVE PICTURED VIEWS, AS PATTERNS, AND CUT FROM MAT BOARD.
2. TAPE ALL OF THEM TOGETHER AND PAINT OUTSIDE AND INSIDE IN A DULL BLACK PAINT.

# HAND MADE "HOOD MAN"

BRUCE BRODIE  
530/346-6889



NOTES: ON MAKING ONE FOR YOUR OWN  
CAMERA:

1. DRAW EVERYTHING FULL SIZE.
2. DEVELOPE ALL SIDES FROM THE PROPER ANGLE - DON'T GIVE UP IT WILL WORK!
3. USE MATT BOARD TO CUT ALL SIDES.
4. ATTACH WITH MASKING TAPE AND PAINT ALL SURFACES IN A DULL BLACK SPRAY PAINT.